

+ INVISIBLE POWER COMBINED FUNCTION

High-quality ventilation flap drive with integrated locking function for future-oriented architectural projects

The VFD ventilation flap drive impresses with its innovative design: invisibly hidden in the sash and barely noticeable even when open. Its unique combination of opening and locking drive in a compact motor gear unit combines maximum ease of use with efficiency. High-quality materials and a whisper-quiet planetary gear ensure a longevity and

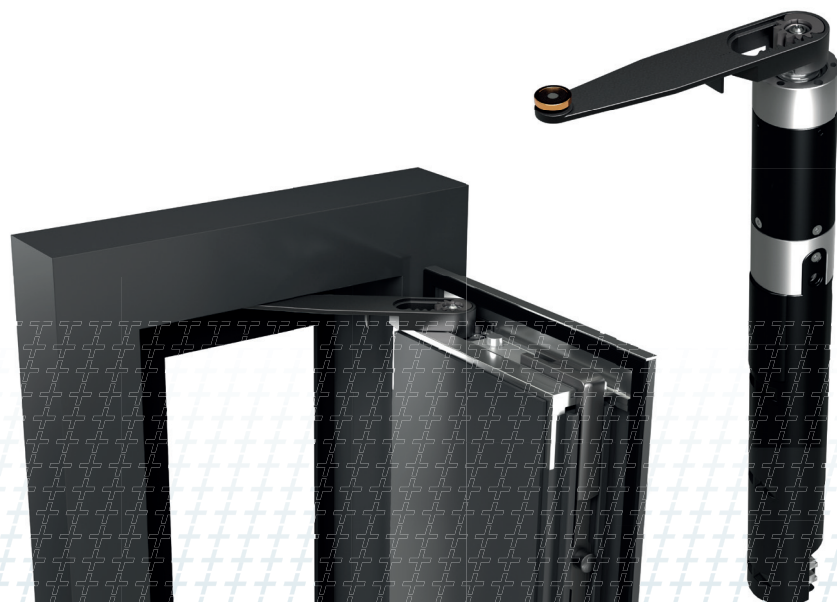
robustness. The uncomplicated plug-and-play installation, flexible sash opening angles of up to 130° and the automatic teach-in function enable solutions for individual project requirements.

Product features

- » Quiet drive for virtually silent opening, closing, locking and unlocking of ventilation flaps
- » Flexible self-learning function: during initial operation, the drive automatically learns the maximum opening width
- » Stainless steel components, a planetary gear with a double ball-bearing output shaft and a brushless motor ensure an exceptionally long service life
- » Can be integrated into both aluminium and wooden profiles
- » Integrated emergency release function for manual opening

Technical details

- » Synchronisation of two drives for large ventilation flaps possible
- » Individually adjustable torques up to 22 Nm
- » Locking forces can be programmed up to 1200 N
- » Opening angle: up to 130°
- » Supply: 24 V DC
- » ACB technology: direct integration into the BMS via open Modbus RTU protocol



WWW.DH-PARTNER.COM