



+ PLANNING MANUAL DRIVES FOR GUTMANN

Gutmann façade and roof solutions
GWD 070, 070i, 080 and 080i

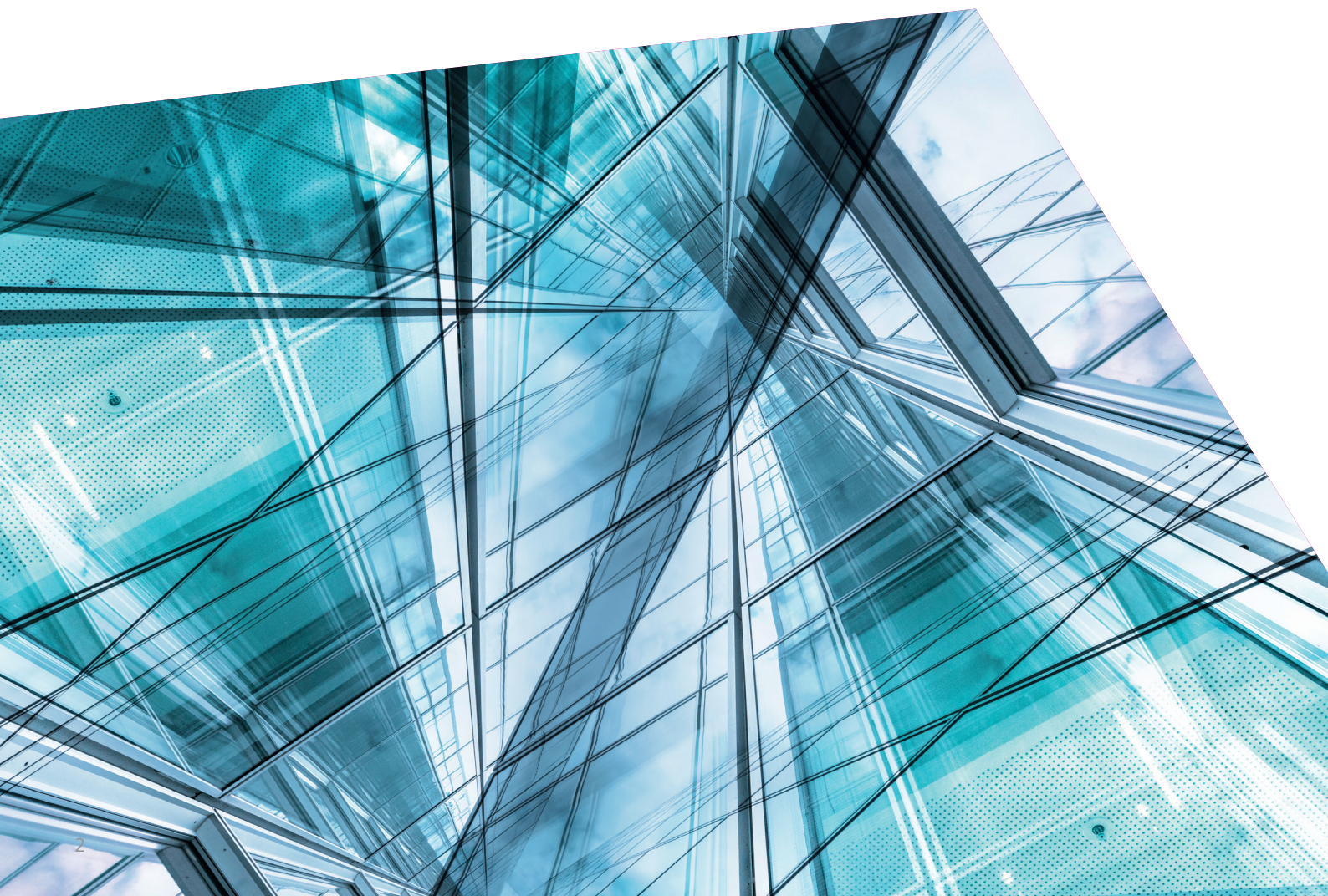
INTRODUCTION

The **Planning Manual for GUTMANN SYSTEMS** assists you as a planner, architect or contractor in the planning and calculation of window drive solutions. This manual has been specially designed for applications of **GUTMANN** windows in combination with D+H drives.

It is clearly organised according to opening type and the performance ranges are clearly defined, allowing you to see the implementation options at a glance. The individual chapters are arranged according to the tested opening types and cover

both façade and roof applications. These applications are each introduced with a summary of the performance range.

At **mycalc.dh-partner.com**, you can quickly and conveniently calculate an appropriate window drive for your profile.



CONTENTS

Application in façades

The VCD – Ventic Chain Drive

Series GWD 070, GWD 080 HW

VCD-BS004-VFI

25.CAD.KS

5

The CDC – Chain Drive Compact

Series GWD 070, GWD 080 HW

BS-CDC-PI01-M-VFI

26.800.01

11

Colour variants

17

Application in the roof

The CDP – Chain Drive Power

Series GWD 070 Roof windows

CDP-BS021-OM

26.CBF.KS

18

Colour variants

21

The ZA – Rack and pinion drive

Series GWD 070 Roof windows

ZA-BS044-OM

27.BDK.KS

22

Colour variants

24

The DXD – Duplex Drive

Series GWD 070 Roof windows

DXD-BS028-OM

27.ACW.KS

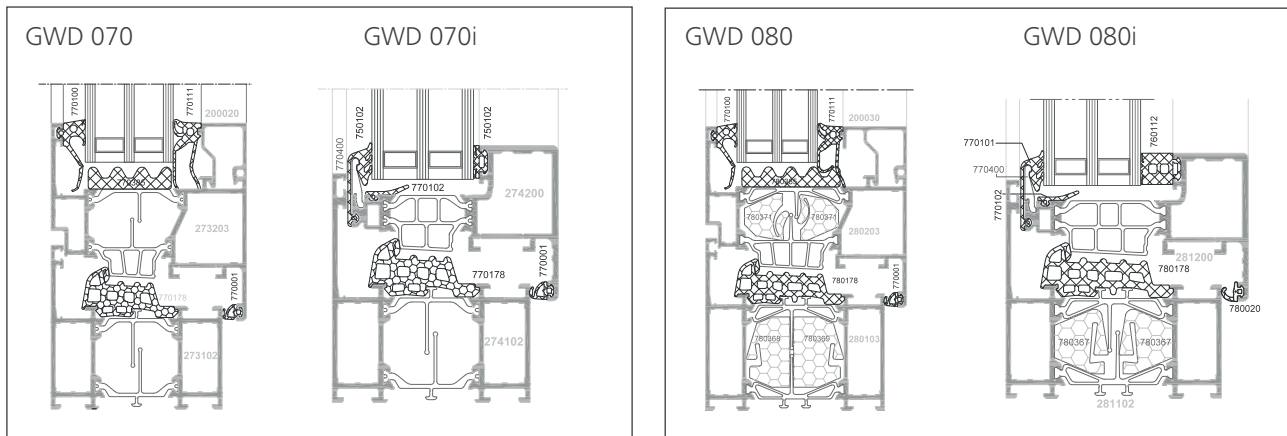
25

Colour variants

27

OVERVIEW OF PROFILES AND APPLICATIONS

Profile series



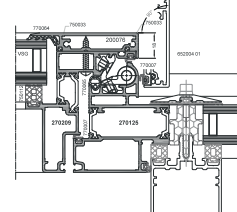
Sash sizes

Bottom-hung and top-hung windows	Horizontal format	Vertical format	Hidden
Sash width	520 - 1600 mm	520 - 1600 mm	470 - 1600 mm
Sash height	405 - 1300 mm	1200 - 2400 mm	650 - 1200 mm
Sash weight	up to 130 kg	up to 130 kg	up to 80 kg

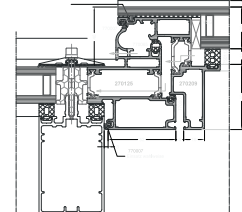
Side-hung windows	Horizontal format	Vertical format	Hidden
Sash width	none	380 - 1600 mm	380 - 1300 mm
Sash height	none	600 - 2400 mm	500 - 2400 mm
Sash weight	130 kg		

Roof windows	
Sash width	530 - 1370 mm
Sash height	550 - 1760 mm
Sash weight	100 kg

Roof window top



Roof window bottom



Special features

- Sash weight >130 kg on request from Gutmann Bausysteme GmbH
- It is essential to observe the work guidelines of Gutmann Bausysteme GmbH
- For information on the maximum dimensions of top-hung window sashes, please contact Gutmann Bausysteme GmbH

Application in façades

THE VCD – VENTIC CHAIN DRIVE

- » 24 V and 230 V
- » 200 N force
- » Up to 350 mm stroke for ventilation only
- » Inward-opening windows: bottom-hung, top-hung and side-hung
- » Mounted installation
- » Single and multiple drives, with and without lock drive



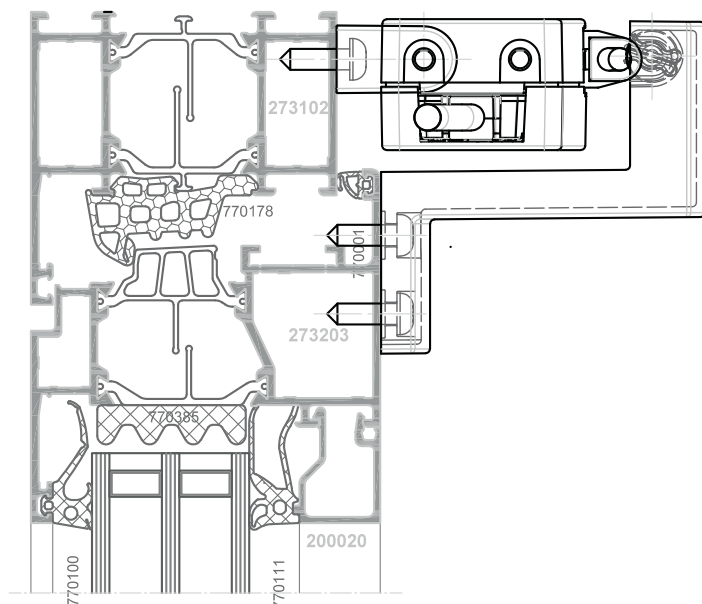
Options:

- » CP customer-specific drive function programming
- » HP stroke programming
- » SGI position transmitter for SE 622
- » SA signal "OPEN"
- » SZ signal "CLOSED"
- » Longer connection cable 5 m
- » Longer connection cable 10 m
- » Housing colour silver
- » Housing colour white
- » Housing colour black
- » Special colour in accordance with RAL

Installation options for the VCD



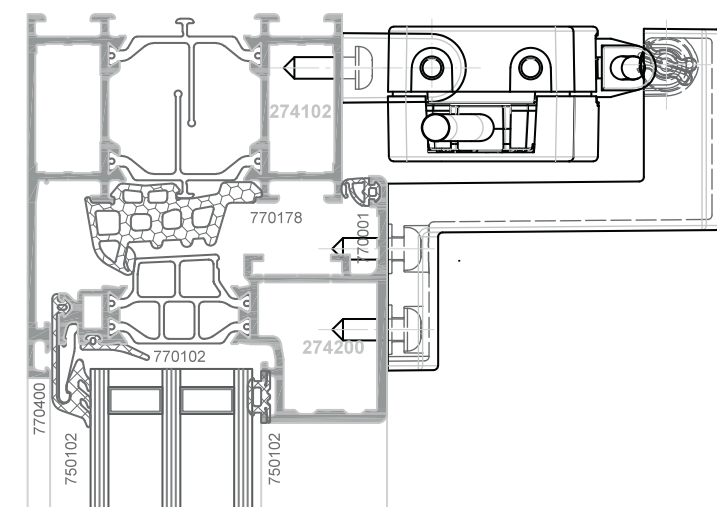
Example of installation in GWD 070 system (bottom-hung vent)



Bracket: VCD-BS004-VFI (D+H article number: 25.CAD.KS)

[Download instruction for use](#)

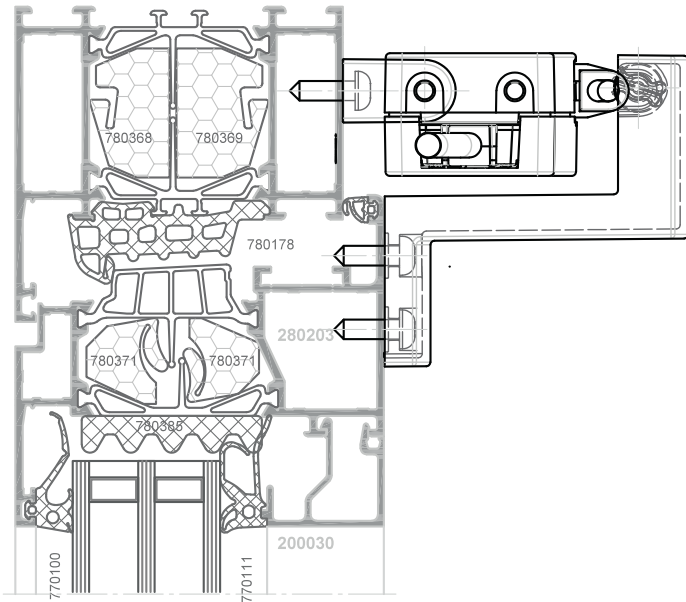
Example of installation in GWD 070i system (bottom-hung vent)



Bracket: VCD-BS004-VFI (D+H article number: 25.CAD.KS)

[Download instruction for use](#)

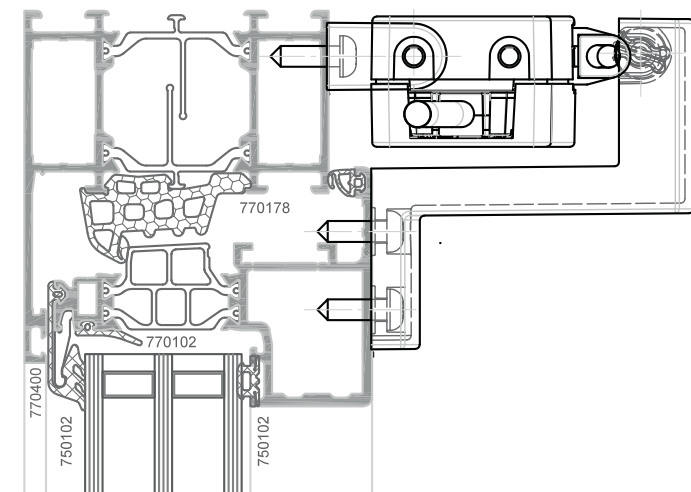
Example of installation in GWD 080 system (bottom-hung vent)



Bracket: VCD-BS004-VFI (D+H article number: 25.CAD.KS)

Download instruction for use

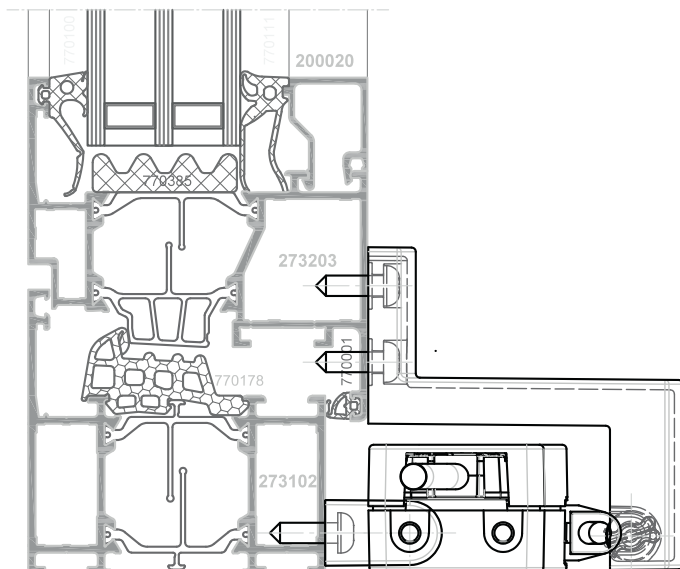
Example of installation in
GWD 080i system (bottom-hung vent)



Bracket: VCD-BS004-VFI (D+H article number: 25.CAD.KS)

Download instruction for use

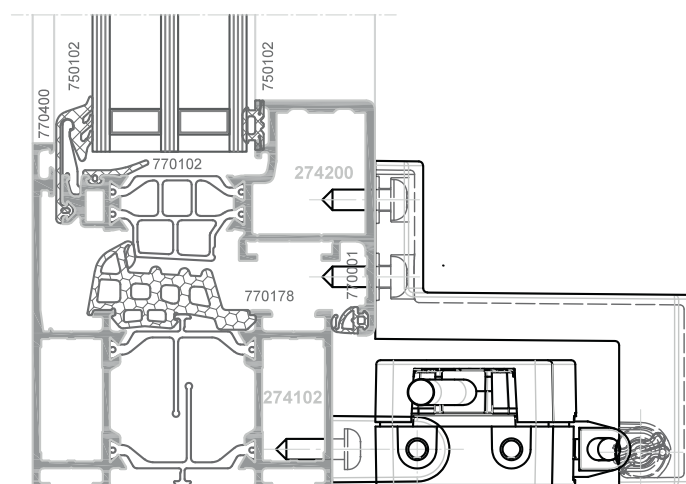
Example of installation in GWD 070 system (top-hung vent)



Bracket: VCD-B5004-VFI (D+H article number: 25.CAD.KS)

[Download instruction for use](#)

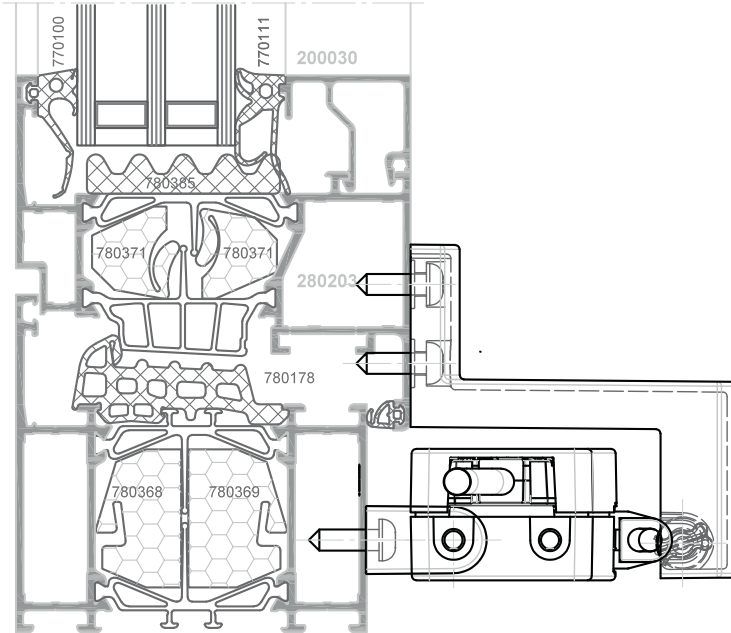
Example of installation in GWD 070i system (top-hung vent)



Bracket: VCD-B5004-VFI (D+H article number: 25.CAD.KS)

[Download instruction for use](#)

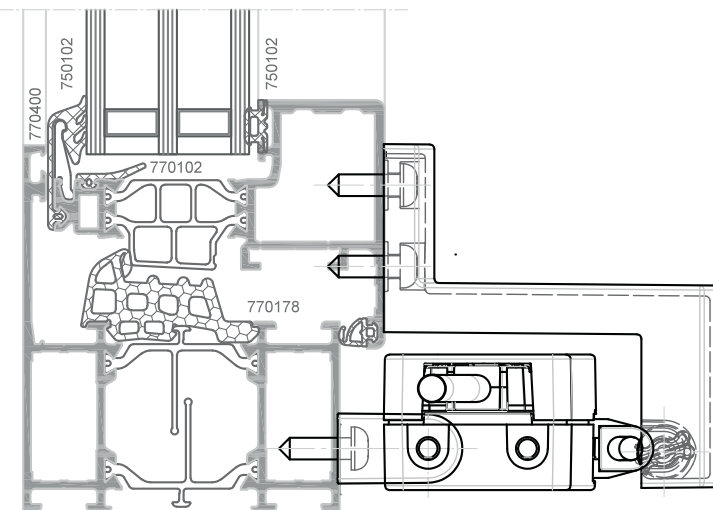
Example of installation in GWD 080 system (top-hung vent)



Bracket: VCD-BS004-VFI (D+H article number: 25.CAD.KS)

[Download instruction for use](#)

Example of installation in GWD 080i system (top-hung vent)



Bracket: VCD-BS004-VFI (D+H article number: 25.CAD.KS)

[Download instruction for use](#)

Application in façades

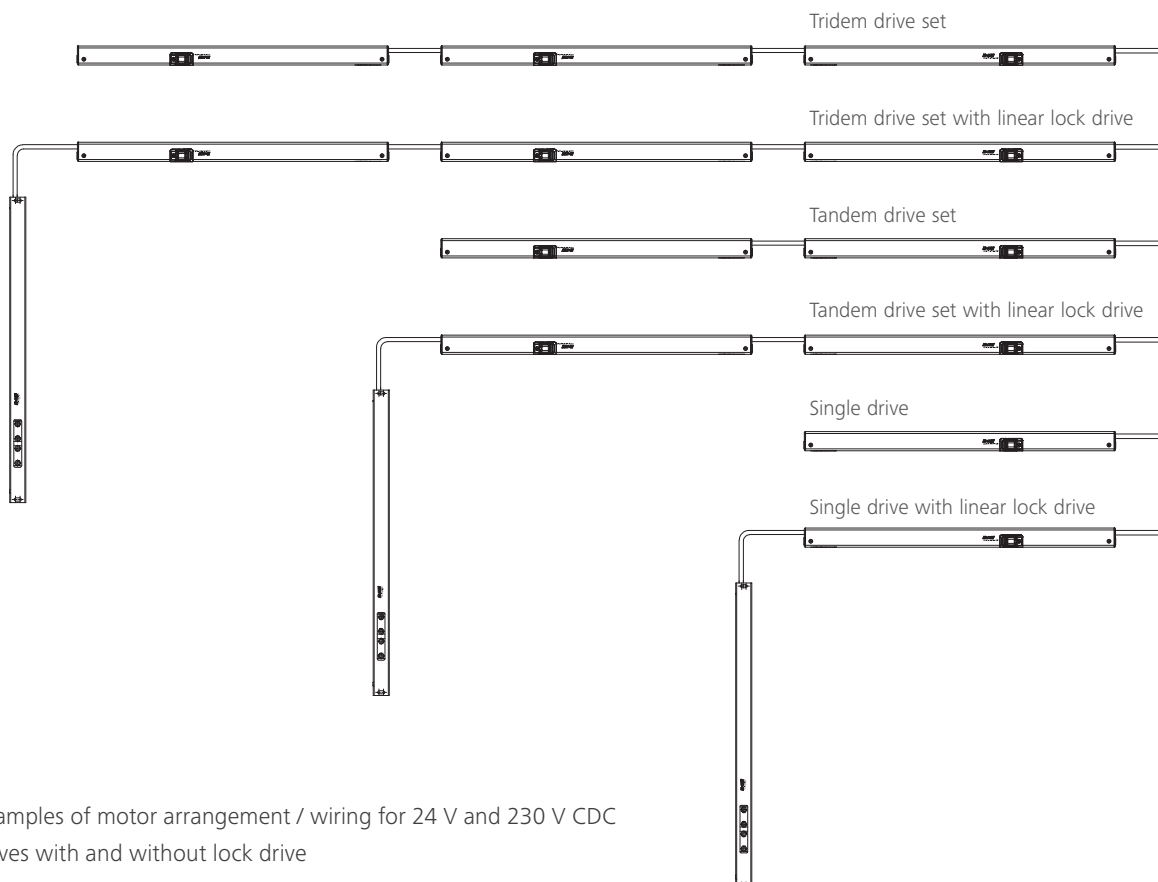
THE CDC – CHAIN DRIVE COMPACT

- » 24 V and 230 V
- » 250 N force
- » Up to 800 mm stroke
- » Up to 1300 mm stroke for smoke exhaust and ventilation
- » Inward-opening windows: bottom-hung, top-hung and side-hung
- » Mounted installation
- » Single and multiple drives, with and without lock drive



Options:

- » R "right" design / L "left" design
- » HP stroke programming
- » SBD/U side bow chain
- » Trapezoidal application
- » ZB drawbridge application
- » VP signal programming for connecting with lock drive VLD BSY+
- » KM powerful 400 N motor gearbox unit in opening range O1 and closing range C1
- » LS low-speed programming in CLOSED direction (5 mm/s) – corresponding to protection class 3
- » AS2 audible signal – corresponding to protection class 2
- » AS3 audible signal – corresponding to protection class 3
- » SKS connection of an external sensor for closing edge protection – corresponding to protection class 4
- » Longer connection cable max. 10 m for 24 V motors, max. 7.5 m for 230 V motors
- » Cable colours light grey, black and white

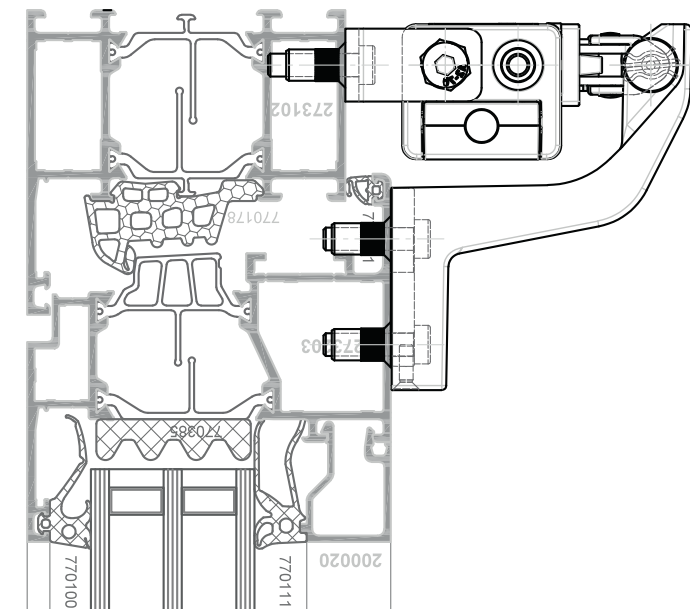


Examples of motor arrangement / wiring for 24 V and 230 V CDC drives with and without lock drive

Installation options for the CDC



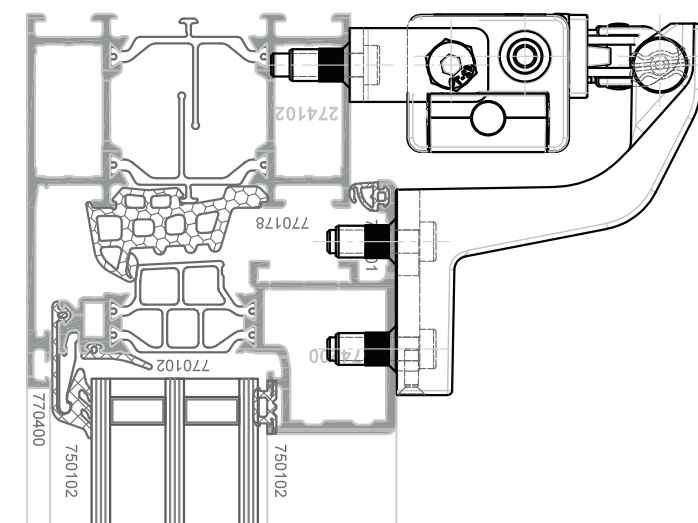
Example of installation in GWD 070 system (bottom-hung vent)



Bracket: BS-CDC-PI01-M-VFI (D+H article number: 26.800.01)

[Download instruction for use](#)

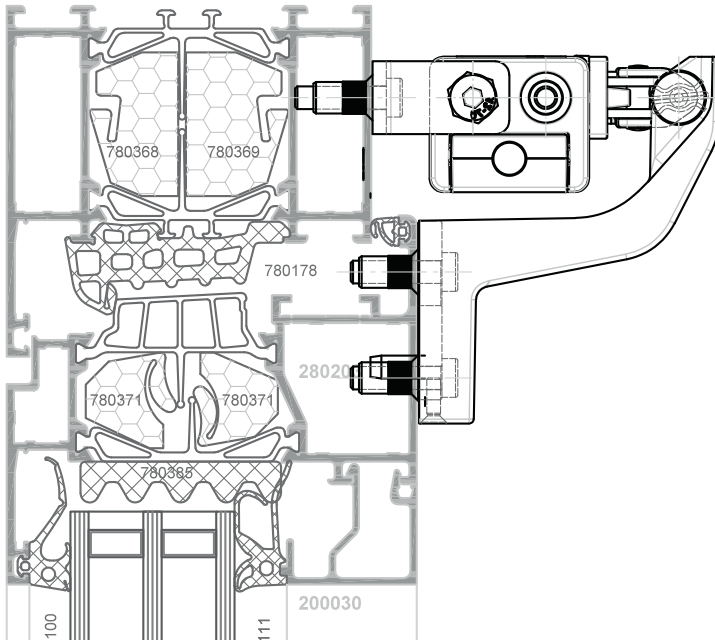
Example of installation in GWD 070i system (bottom-hung vent)



Bracket: BS-CDC-PI01-M-VFI (D+H article number: 26.800.01)

[Download instruction for use](#)

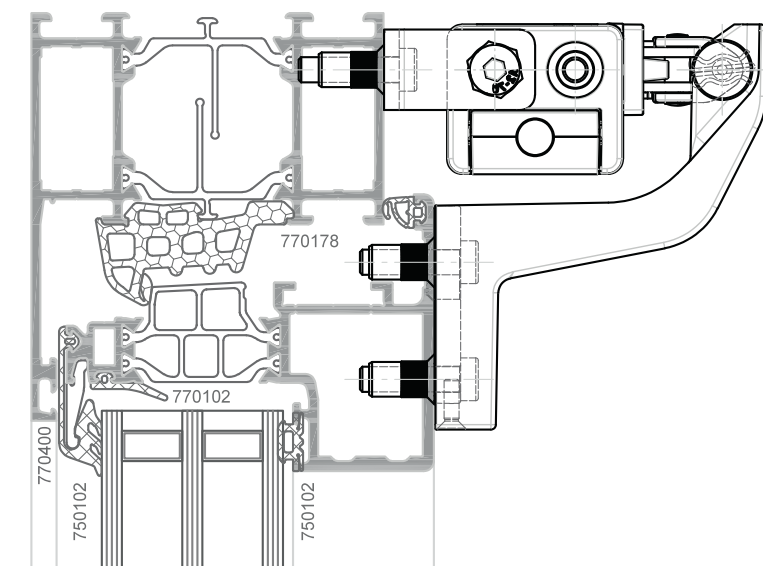
Example of installation in GWD 080 system (bottom-hung vent)



Bracket: BS-CDC-PI01-M-VFI (D+H article number: 26.800.01)

[Download instruction for use](#)

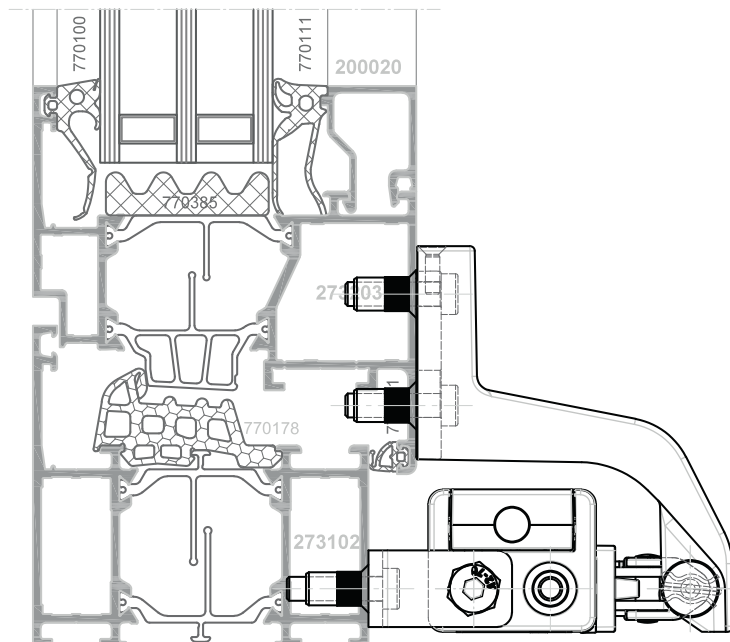
Example of installation in GWD 080i system (bottom-hung vent)



Bracket: BS-CDC-PI01-M-VFI (D+H article number: 26.800.01)

[Download instruction for use](#)

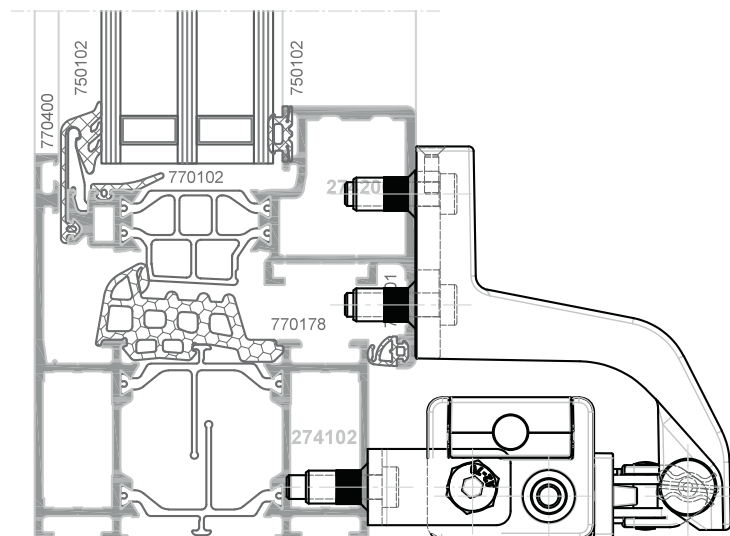
Example of installation in GWD 070 system (top-hung vent)



Bracket: BS-CDC-PI01-M-VFI (D+H article number: 26.800.01)

[Download instruction for use](#)

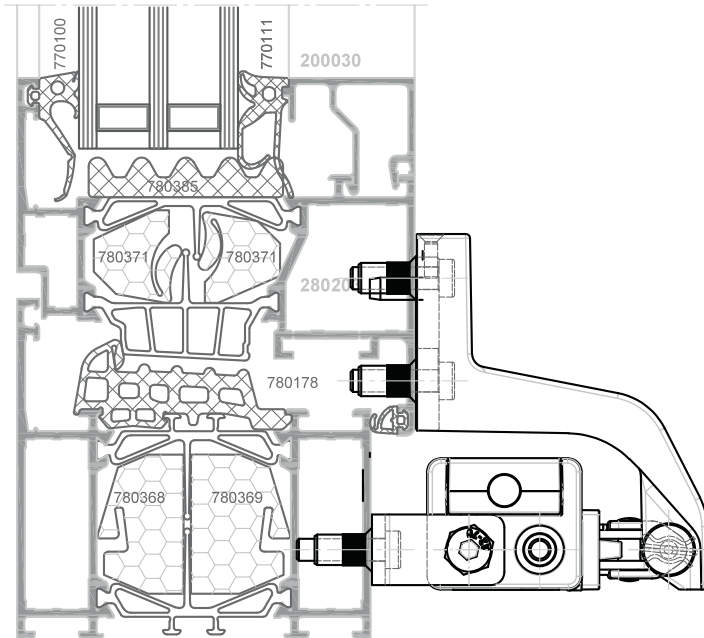
Example of installation in GWD 070i system (top-hung vent)



Bracket: BS-CDC-PI01-M-VFI (D+H article number: 26.800.01)

[Download instruction for use](#)

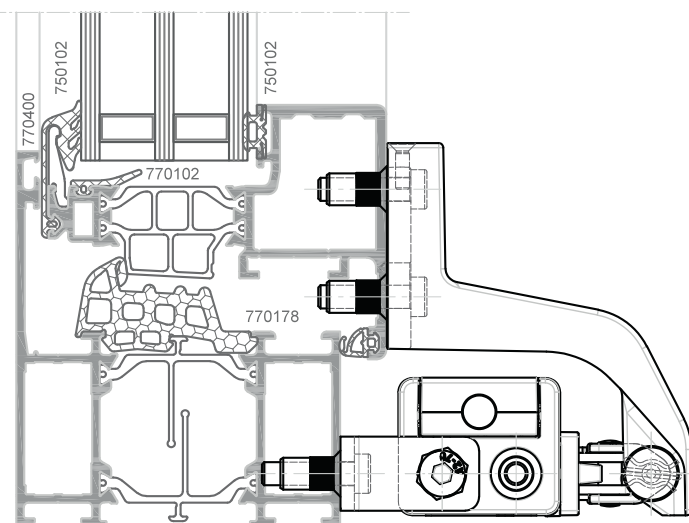
Example of installation in GWD 080 system (top-hung vent)



Bracket: BS-CDC-PI01-M-VFI (D+H article number: 26.800.01)

[Download instruction for use](#)

Example of installation in GWD 080i system (top-hung vent)



Bracket: BS-CDC-PI01-M-VFI (D+H article number: 26.800.01)

[Download instruction for use](#)

COLOUR VARIANTS FOR THE CDC

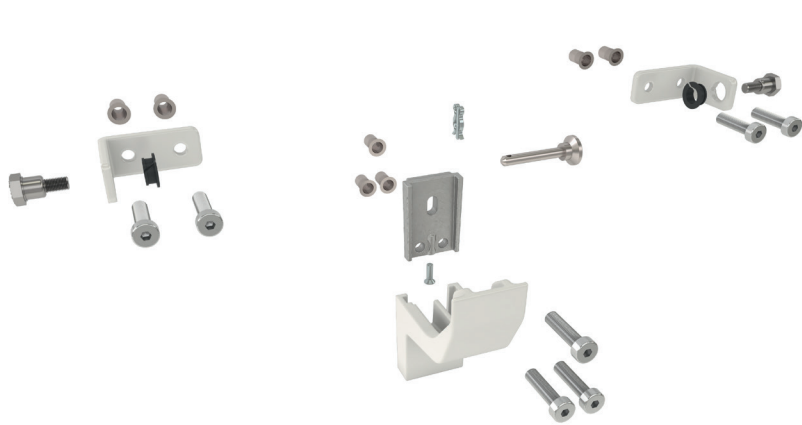
Ordering and scope of supply

RAL colour system	Ordering process
<ul style="list-style-type: none"> The RAL colour systems are standards from the RAL Institute for colours. The most well-known is the range of colours known today as the RAL Classic colour chart with four-digit colour codes, which has existed since 1927 and today comprises 210 colours. With our CDC brackets, the sash bracket is painted or powder-coated in the RAL colour of your choice, in accordance with the RAL K5 colour guide. The RAL colours 9006/9007/9016 and the DB colour 703 can be offered with shorter delivery times. 	<p>When placing an order, please provide the following information:</p> <ul style="list-style-type: none"> Variant: Type: CDC-BS/C, Art. No. 25.AC.V.KS Type of bracket to be painted, e.g: CDC-BS034-IFI (if necessary, use the planning guide to quickly find a suitable bracket set) Desired colour (4-digit RAL number), with colour name if applicable Process (paint or powder coating) Quantity Packaging (single pack or multi-pack)

Product information	Colour variant CDC bracket
Type	CDC-BS/C
Art. no. of set	25.AC.V.KS
Colour system	RAL Classic K5 (other colours on request)
Process	Paint, powder coating
Scope of supply	as standard version

How to order	Example details
Type / art. no. of variant	CDC-BS/C / 25.AC.V.KS
Type	CDC-BS034-IFI
Desired colour	RAL 9016 Traffic white
Process	Liquid coating
Quantity	100
Packaging	Multi-pack

CDC-BS/C example



RAL 9006*	White aluminium
RAL 9007*	Grey aluminium
RAL 9016*	Traffic white
DB 703*	

Sash bracket** is painted in RAL colour xxxx.

*The colours shown are for reference only. The print colours cannot reproduce the paint as true to life.

** Cover plates, frame bracket, cotter pins and screws are not painted.

Application in the roof

THE CDP – CHAIN DRIVE POWER

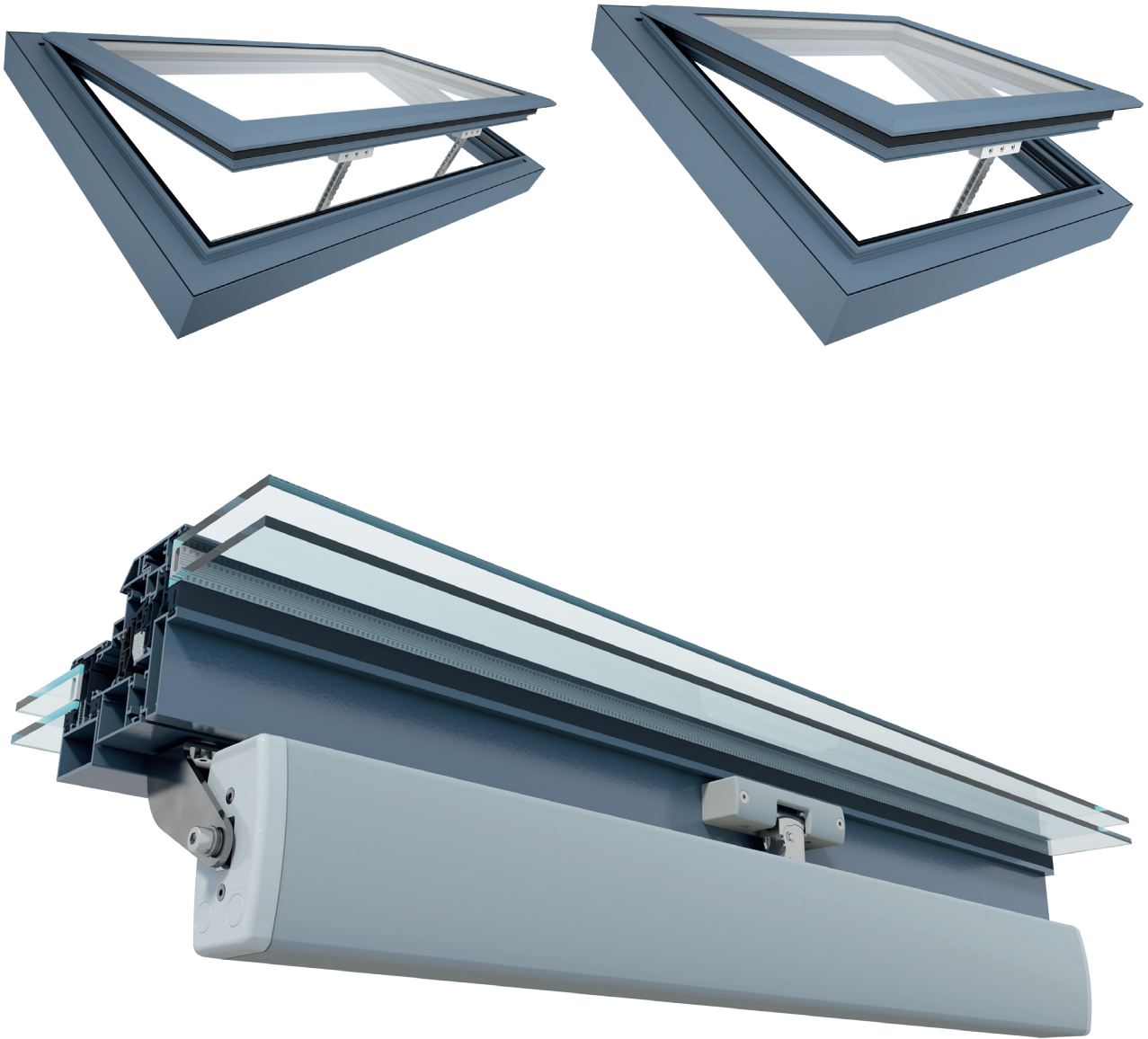
- » 24 V and 230 V
- » 1500 N to 6000 N force
- » Up to 1500 mm stroke
- » Single and multiple drives, with and without lock drive



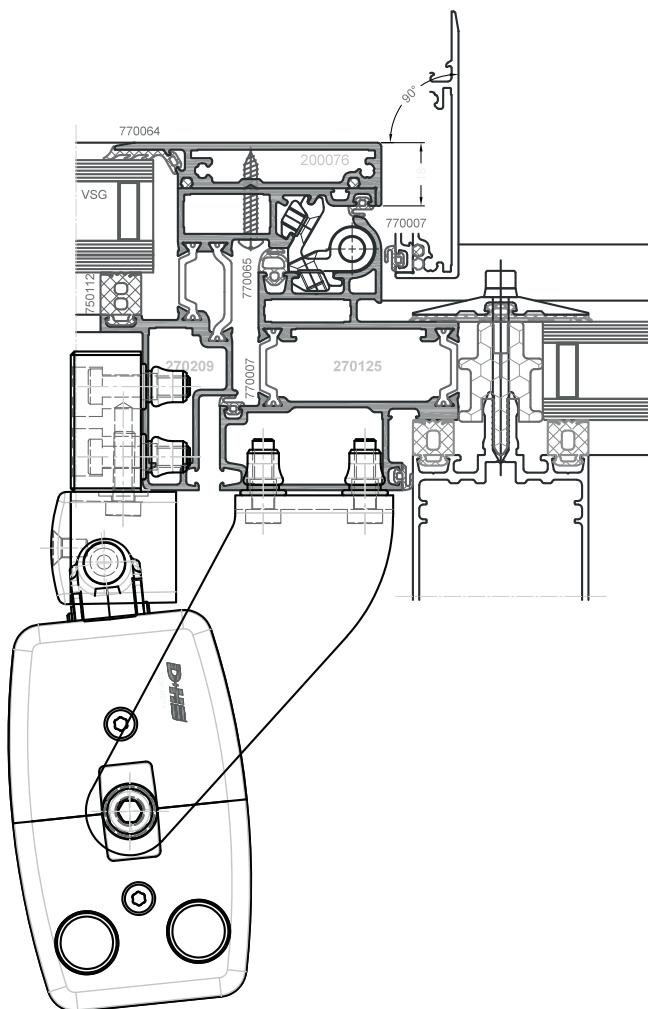
Options:

- » Design CDP 800-BSY+ (800 N), CDP 1000-BSY+ (1000 N) and CDP 1500-BSY+ (1500 N)
- » CP customer-specific drive function programming
- » HP stroke programming
- » VP signal programming for connecting with BSY+ lock drives
- » LS low-speed programming in CLOSED direction (5 mm/s)
- » SGI position transmitter for SE 622
- » SKS connection for closing edge protection
- » SA-SZ OPEN and CLOSED signal
- » LS low-speed programming in CLOSED direction (5 mm/s) – corresponding to protection class 3
- » AS2 audible signal – corresponding to protection class 2
- » AS3 audible signal – corresponding to protection class 3
- » DS loop option for looping in another drive
- » Longer connection cable with additional 2.5 m (max. 10.0 m)
- » Special colour in accordance with RAL*

Installation options for the CDP



Example of installation in
GWD 070 system (roof window)



Bracket: CDP-BS021-OM (D+H article number: 26.CBF.KS)

Download instruction for use

COLOUR VARIANTS FOR THE CDP

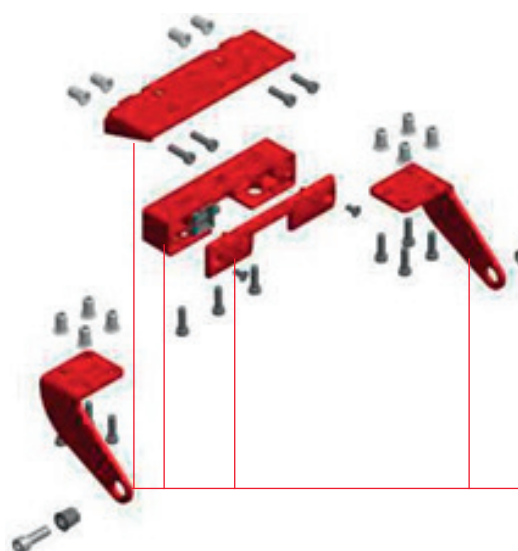
Ordering and scope of supply

RAL colour system	Ordering process
<ul style="list-style-type: none"> The bracket variant can be used to order the bracket set as well as the sash, frame and basic brackets as a painted version. Colour variant: <ul style="list-style-type: none"> The RAL colour systems are standards from the RAL Institute for colours. The most well-known is the range of colours known today as the RAL Classic colour chart with four-digit colour codes, which has existed since 1927 and today comprises 210 colours. With our CDP brackets, the sash and frame bracket is painted and powder-coated in the RAL colour of your choice, in accordance with the RAL K5 colour guides. 	<p>When placing an order, please provide the following information:</p> <ul style="list-style-type: none"> Variant: Type: CDP BS/C, Art. No.: 26.CBC.KS Process: Paint or powder coating Type of desired bracket, e.g: CDP-BS004-OM (if necessary, use the planning guide to assist you) Quantity Packaging (single pack or multi-pack) Desired colour (4-digit RAL number), with colour name if applicable The surcharges for painting vary depending on the number of parts to be painted

Product information	Colour variant CDP bracket
Type	CDP-BS/C
Art. no. of set	26.CBC.KS
Colour system	RAL Classic K5 (other colours on request)
Process	Paint, powder coating
Scope of supply	as standard version

How to order	Example details
Type / art. no. of variant	CDP-BS/C / 26.CBC.KS
Type	CDP-BS004-OM
Desired colour	RAL 9016 Traffic white
Process	Paint (liquid coating)
Quantity	100
Packaging	Multi-pack

Example of bracket set CDP-BS004-OM



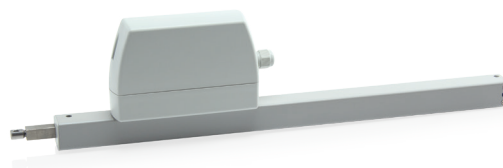
Painted parts are shown in red for clarity.
Screws and cotter pins are not painted.

Parts are painted in special colour RAL xxxx

Application in the roof

ZA SERIES

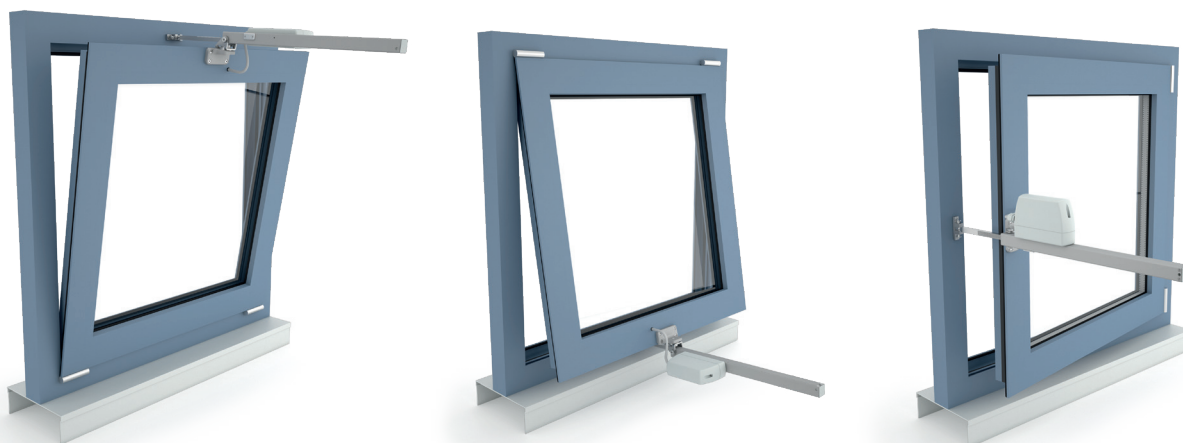
- » 24 V and 230 V
 - » 300 N to 1500 N force
 - » Up to 1000 mm stroke
 - » Up to 1500 mm stroke for smoke exhaust and ventilation
-
- » Single and multiple drives, with and without lock drive for 24 V drives
 - » Single and multiple drives for 230 V drives



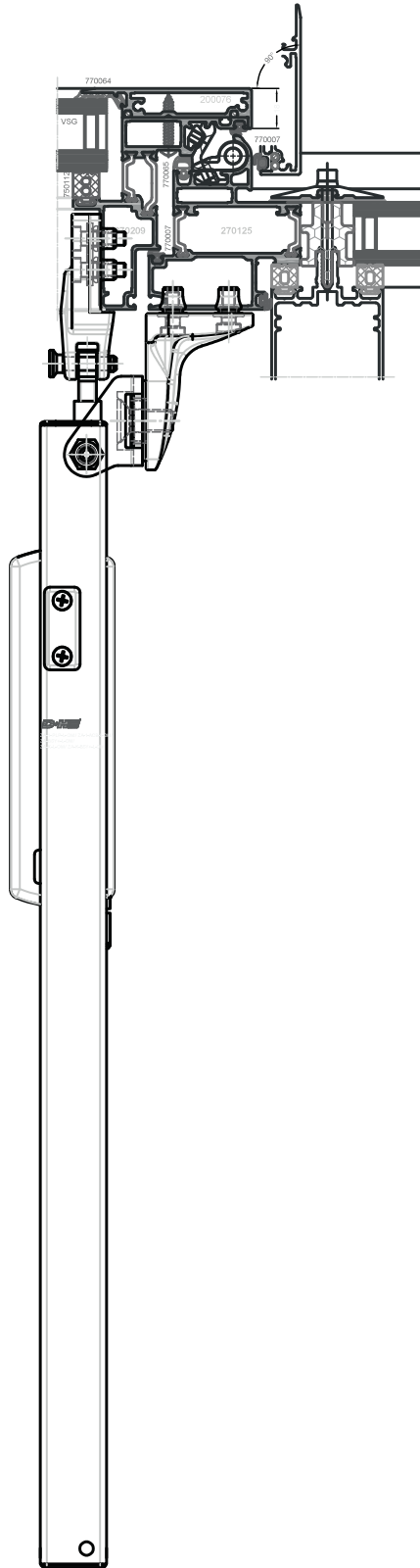
Options:

- » 300 N, 800 N, 1000 N and 1500 N design
- » R "right" design / L "left" design
- » HS high-speed design
- » OT design without tube
- » HP stroke programming
- » VP signal programming for connecting with lock drive VLD BSY+
- » SA-SZ OPEN and CLOSED signal
- » LS low-speed programming in CLOSED direction (5 mm/s) – corresponding to protection class 3
- » AS2 audible signal – corresponding to protection class 2
- » AS3 audible signal – corresponding to protection class 3
- » SKS connection of an external sensor for closing edge protection – corresponding to protection class 4
- » W weatherproof option
- » WS weatherproof special option suitable for use in indoor swimming pools (not ZA-OT)
- » Longer connection cable max. 12.5 m for 24 V motors, max. 8 m for 230 V motors
- » Cable colours light grey, black and white

Installation options for the ZA



Example of installation in
GWD 070 system (roof window)



Bracket: ZA-BS044-OM (D+H article number: 27.BDK.KS)

Download instruction for use

COLOUR VARIANTS FOR THE ZA

Ordering and scope of supply

RAL colour system

- The bracket variant can be used to order the bracket set as well as the sash, frame and basic brackets as a painted version.
- Colour variant:
 - The RAL colour systems are standards from the RAL Institute for colours. The most well-known is the range of colours known today as the RAL Classic colour chart with four-digit colour codes, which has existed since 1927 and today comprises 210 colours.
 - With our ZA brackets, the sash and frame bracket is painted and powder-coated in the RAL colour of your choice, in accordance with the RAL K5 colour guides.

Ordering process

When placing an order, please provide the following information:

- Variant: Type: ZA BS/C, Art. No.: 27.BAV.KS
- Process: Paint or powder coating
- Type of desired bracket, e.g: ZA-BS004-OM (if necessary, use the planning guide to assist you)
- Quantity
- Packaging (single pack or multi-pack)
- Desired colour (4-digit RAL number), with colour name if applicable
- The surcharges for painting vary depending on the number of parts to be painted

Product information

Type
Art. no. of set
Colour system
Process
Scope of supply

Colour variant ZA bracket

ZA-BS/C
27.BAV.KS
RAL Classic K5 (other colours on request)
Paint, powder coating
as standard version

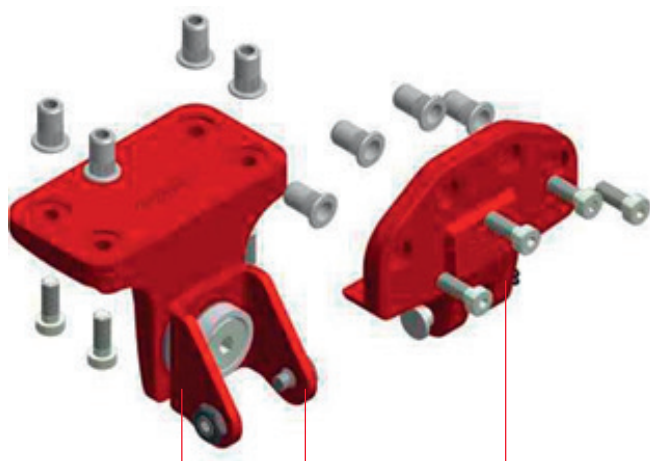
How to order

Type / art. no. of variant
Type
Desired colour
Process
Quantity
Packaging

Example details

ZA-BS/C / 27.BAV.KS
ZA-BS004-OM
RAL 9016 Traffic white
Paint (liquid coating)
100
Multi-pack

Example of bracket set ZA-BS004-OM



Painted parts are shown in red for clarity.
Screws and cotter pins are not painted.

Parts are painted in special colour RAL xxxx

Application in the roof

DXD SERIES

- » 24 V and 230 V
- » 3000 N force
- » 500 mm to 1500 mm stroke

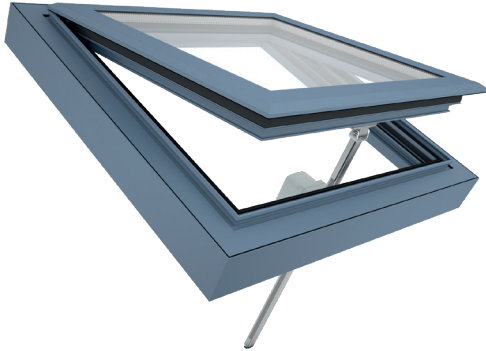


- » Single and multiple drives, with and without lock drive for 24 V drives
- » Single and multiple drives for 230 V drives

Options:

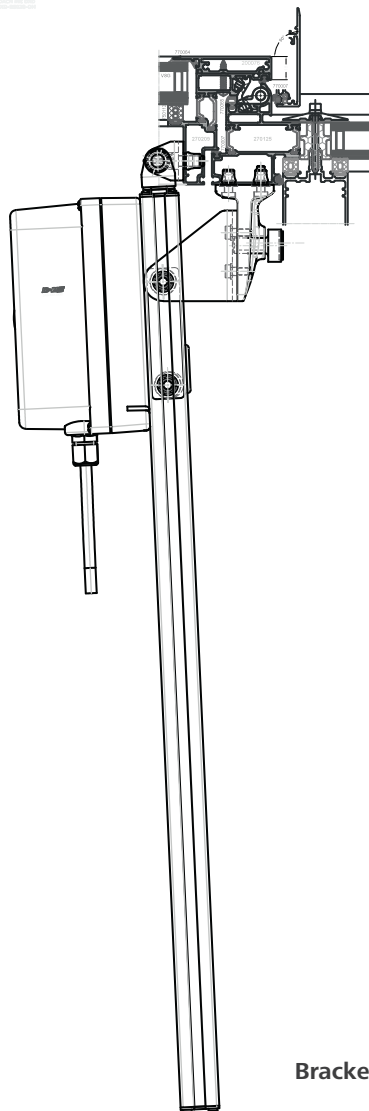
- » Design without tube DXD 300-OT (3000 N)
- » Design with tube DXD 300 (3000 N)
- » HS high-speed design
- » CP customer-specific drive function programming
- » HP stroke programming
- » VP signal programming for connecting with BSY+ lock drives
- » SA-SZ OPEN and CLOSED signal
- » SGI position transmitter for SE 622
- » LS low-speed programming in CLOSED direction (5 mm/s)
- » AS2 audible signal – corresponding to protection class 2
- » AS3 audible signal – corresponding to protection class 3
- » SKS connection for closing edge protection
- » W weatherproof option
- » WS weatherproof special option suitable for use in indoor swimming pools
- » Longer connection cable with additional 2.5 m (max. 12.5 m)
- » Special colour in accordance with RAL "-OT" (housing only)
- » Special colour in accordance with RAL*

Installation option of the DXD



Example of installation in GWD 070 system (roof window)

© 2015 D+H. Alle Rechte vorbehalten.



Bracket: DXD-BS028-OM (D+H article number: 27.ACW.KS)

[Download instruction for use](#)

COLOUR VARIANTS FOR THE DXD

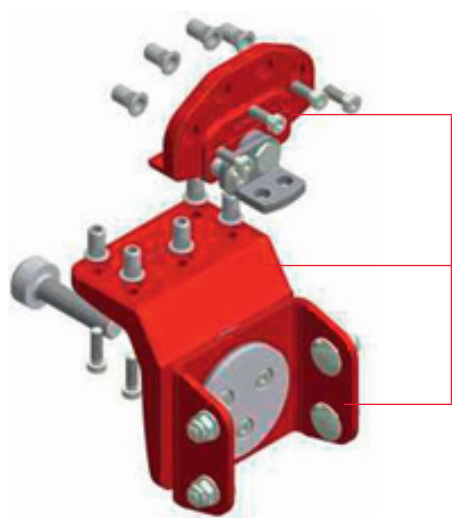
Ordering and scope of supply

RAL colour system	Ordering process
<ul style="list-style-type: none"> The bracket variant can be used to order the bracket set as well as the sash, frame and basic brackets as a painted version. Colour variant: <ul style="list-style-type: none"> The RAL colour systems are standards from the RAL Institute for colours. The most well-known is the range of colours known today as the RAL Classic colour chart with four-digit colour codes, which has existed since 1927 and today comprises 210 colours. With our DXD brackets, the sash and frame bracket is painted and powder-coated in the RAL colour of your choice, in accordance with the RAL K5 colour guides. 	<p>When placing an order, please provide the following information:</p> <ul style="list-style-type: none"> Variant: Type: DXD BS/C, Art. No.: 27.AAV.KS Process: Paint or powder coating Type of desired bracket, e.g: DXD-BS012-OM (if necessary, use the planning guide to assist you) Quantity Packaging (single pack or multi-pack) Desired colour (4-digit RAL number), with colour name if applicable The surcharges for painting vary depending on the number of parts to be painted

Product information	Colour variant ZA bracket
Type	DXD-BS/C
Art. no. of set	27.AAV.KS
Colour system	RAL Classic K5 (other colours on request)
Process	Paint, powder coating
Scope of supply	as standard version

How to order	Example details
Type / art. no. of variant	DXD-BS/C / 27.AAV.KS
Type	DXD-BS012-SM
Desired colour	RAL 9016 Traffic white
Process	Paint (liquid coating)
Quantity	100
Packaging	Multi-pack

Example of bracket set DXD-BS012-OM



Painted parts are shown in red for clarity.
Screws and cotter pins are not painted.

Parts are painted in special colour RAL xxxx



D+H Mechatronic AG
Georg-Sasse-Strasse 28-32
22949 Ammersbek, Germany
Germany

Tel: +49 40 60565 0
Fax: +49 40 60565 222
E-mail: info@dh-partner.com

WWW.DH-PARTNER.COM